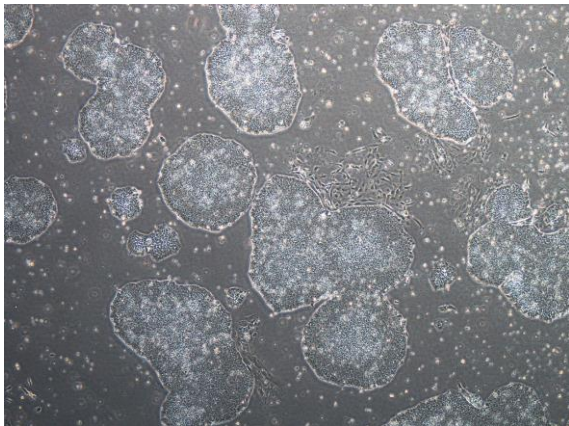
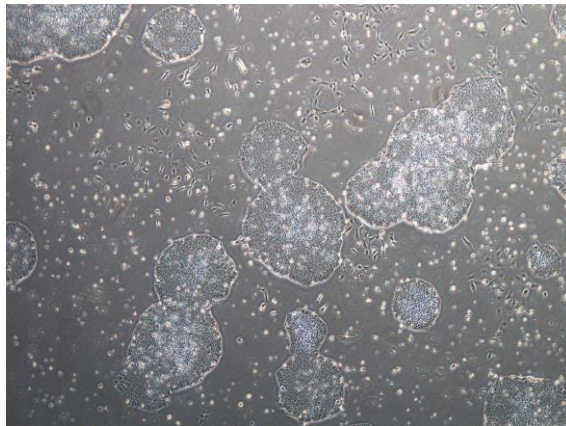


【 CiRA-j-1129 】 Morphology of iPSC colonies

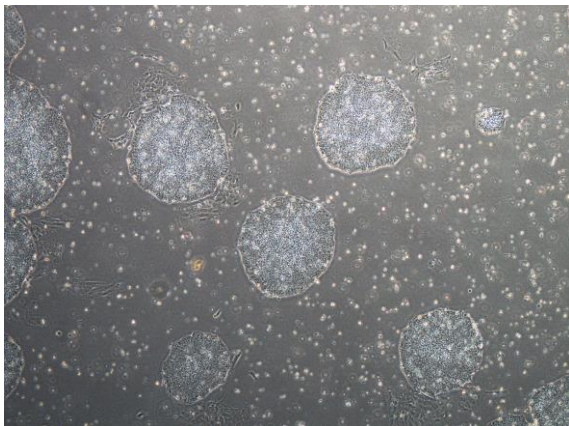
CiRA-j-1129-A: passage-2



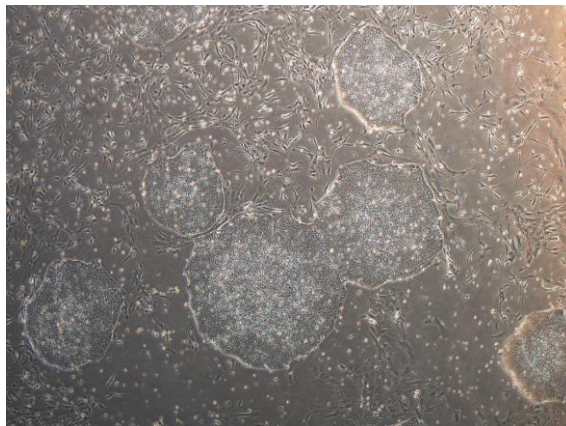
CiRA-j-1129-B: passage-2



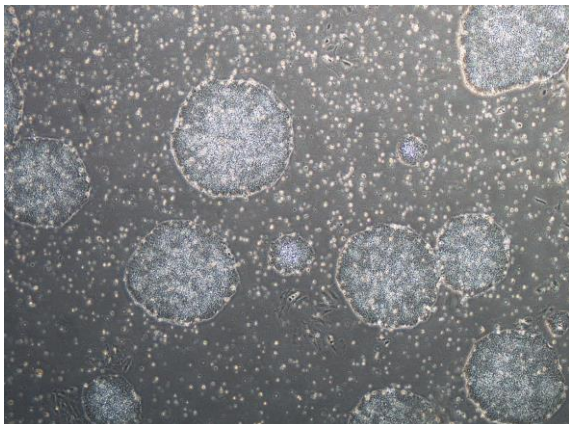
CiRA-j-1129-C: passage-2



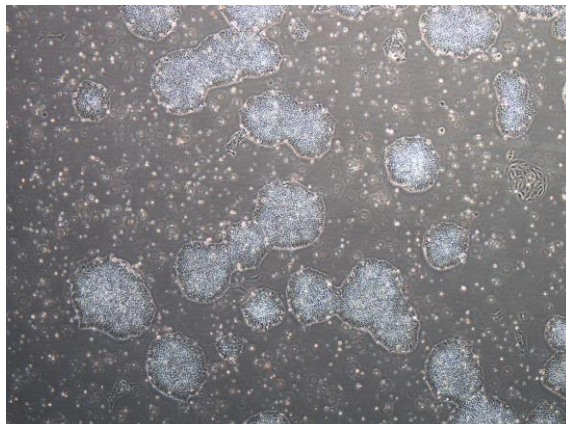
CiRA-j-1129-D: passage-2



CiRA-j-1129-E: passage-2



CiRA-j-1129-F: passage-2



(All images were captured at 4x magnification)